



Inventory Management

SOLUTION FACTSHEET

Manufacturers and distributors must respond quickly to customer demands and make intelligent, cost-effective decisions in order to remain competitive. SYSPRO Inventory Management gives you more control over your inventory by providing greater accuracy and visibility to inventory information throughout the organization.

It forms the core of the manufacturing, distribution and accounting facilities and is designed to integrate with all the major functions of the systems and to provide flexible reporting on inventory holdings.

SYSPRO Inventory Management provides easy access: the on-screen drill down, allows you to access inventory balances, open purchase orders, work orders, and open sales orders at any point in the inventory management process. You can quickly and easily find the quantity of any inventory item which is on-hand, allocated, back-ordered, or on order. Additionally, you can see a list of all customer and supplier orders and item information down to the serial, lot and bin level.

Within Inventory Maintenance, you can define multiple user-defined item attributes. You can set up units of measure for stocking, purchasing and selling transactions. SYSPRO provides the flexibility to cost inventory by warehouse, tracking inventory using average, standard cost, first in first out (FIFO), last in first out (LIFO), or actual costing by lot and serial.

The Benefits of Inventory Management

- Effective control of supply and demand
- Costing methods per warehouse: average, standard, last, LIFO, or FIFO
- Actual cost tracking for lot traceable or batch serialized items
- Multiple pricing options, including quantity-based, discounted, and contract
- Powerful queries into movements and all inventory touch-points in the system, such as related jobs, purchase orders, sales orders, where-used and available-to-promise
- Multiple units of measure, including a separate cost unit of measure per item
- Replenishment rules by stock-keeping unit (SKU)
- Min/max levels, safety stock and re-order quantities per warehouse
- Multiple bin locations per SKU
- Linking of key suppliers and approved manufacturers to purchased items
- Extensive serial tracking and lot traceability with expiration dates
- Goods-in-transit control
- Lead times and dock-to-stock for accurate replenishment planning
- Two-phased receipting of items to be inspected
- Extensive security options for processing inventory and accessing transaction, cost and pricing information
- Fully integrated into forecasting, sales orders, purchase orders, work in progress, materials requirements planning and general ledger.

Product Version:

SYSPRO 8

Related Modules:

- General Ledger
- Activity Based Costing
- Sales Orders
- Purchase Orders
- Forecasting
- Families and Groupings
- Product Configurator
- Return Merchandise
- Trade Promotions
- Blanket Sales Orders and Releases
- Bill of Materials
- Engineering Change Control
- Requirements Planning
- Lot Traceability
- Quotations
- Work in Progress
- SYSPRO Factory Scheduling
- Business-to-Business Trading
- SYSPRO-to-SYSPRO Interface

Sectors:

Manufacturing and Distribution

Industries:

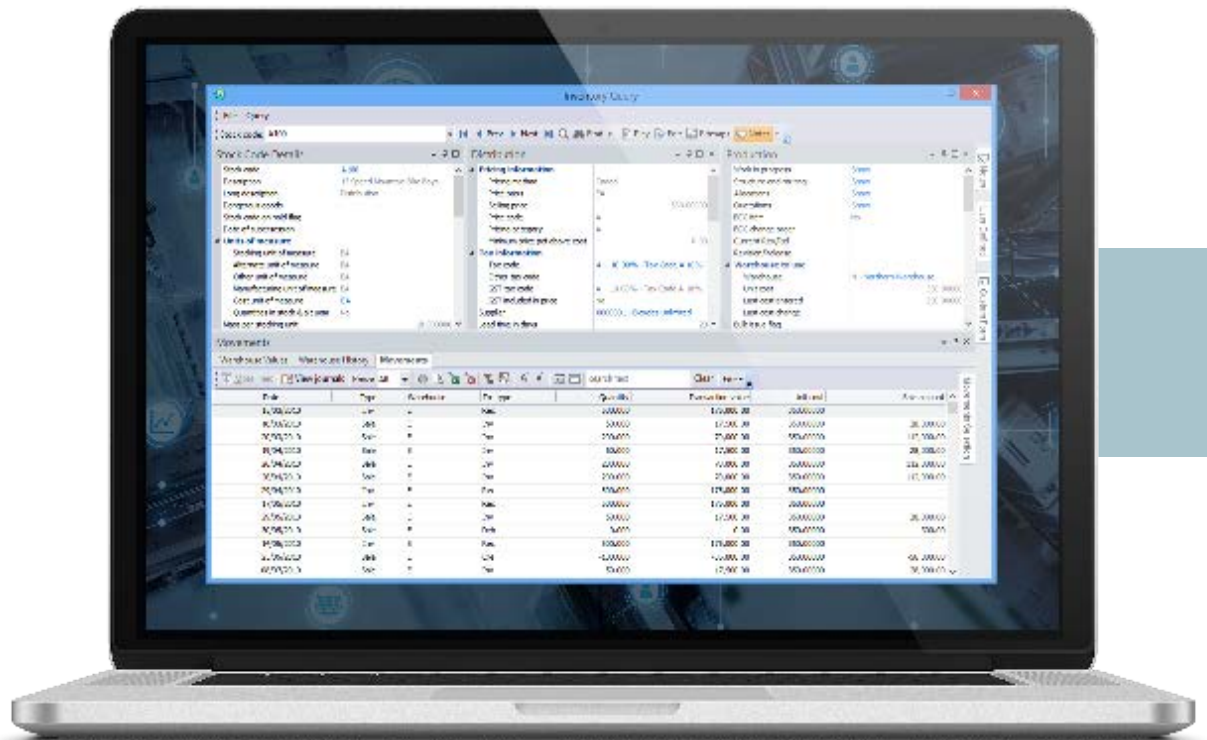
- Automotive Parts and Accessories
- Electronics
- Fabricated Metals
- Food and Beverage
- Industrial Machinery and Equipment
- Packaging
- Plastics and Rubber

Inventory Management Capabilities

- Process inventory receipts, job and expense issues, warehouse transfers, cost adjustments and modifications, and physical adjustments
- Backflush items with short manufacturing cycles
- Track goods in transit between warehouses
- Globally change cost and selling prices
- Record notes per item for purchasing, sales and manufacturing, including technical specs and dangerous goods handling
- Place stock codes on full or partial hold to prevent processing
- Cross-reference supplier and customer stock codes
- Optionally assign the same serial number to multiple items
- Browse stock items using multimedia images
- Group inventory items into sales kits
- Calculate minimum quantity based on usage

Audit Trails and Reporting

- Comprehensive audit trails for all transactions
- Detailed inventory movement reports with flexible run-time options
- Interactive valuation with graphical representation
- Various exception reports to streamline analysis
- Purchasing worksheet to assist buyers
- ABC Analysis facilitate efficient management of resources.



Contact Us

To learn more about our company, products and services visit www.syspro.com